

Configuration file download/ upload instruction using SELCO WinConfig Software

1. Introduction

The WinConfig software is a configuration software compatible with following products:

- SELCO SIGMA S6000 IO/P Module (from firmware 091207 version 3-2-48)
- SELCO SIGMA S6100 S/LS Module (from firmware 091207 version 3-5-53)
- C6200 FlexGen Generator Controller

This manual describes how to download and upload configuration files using SELCO WinConfig software.

When replacing SIGMA or FlexGen units in existing installations, it is necessary to set the CAN bus address on the new unit to the same address as the unit that is to be replaced. This is done through the dip switches on the units (bottom right corner on SIGMA modules, front of the FlexGen modules). Please refer to the product manuals for setting the CAN bus address.

2. Download and Installation of the programming software

The SELCO WinConfig software can be downloaded free of charge from the SELCO web site:

<http://www.selco.com/selco2016/wp-content/uploads/2016/04/SWC-Setup.zip>

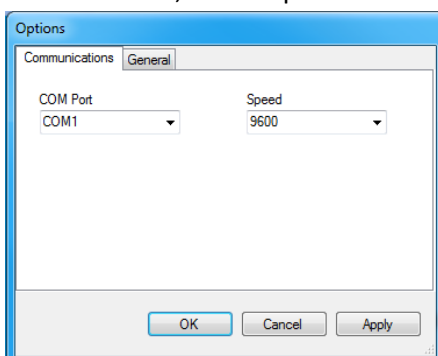
- Extract the zip folder by right clicking on it, then choose “Extract all” and “Extract”
- Double click on “SWC Setup.exe”
- Follow the instructions on the screen

3. Connecting to a unit

Note that WinConfig can only be used when connected to a SIGMA or FlexGen unit. It is not possible to view configuration files when not connected to a unit.


After opening the WinConfig Software you may need to choose the correct COM port before you can connect to a unit. To do so follow these instructions:

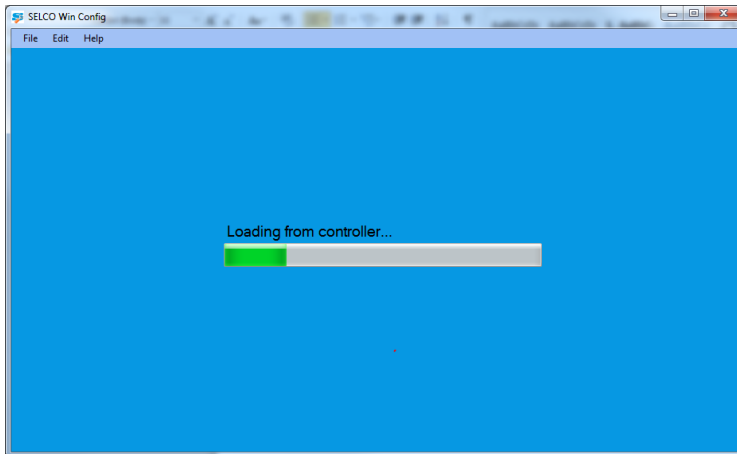
- Click on “Edit”, then “Options”



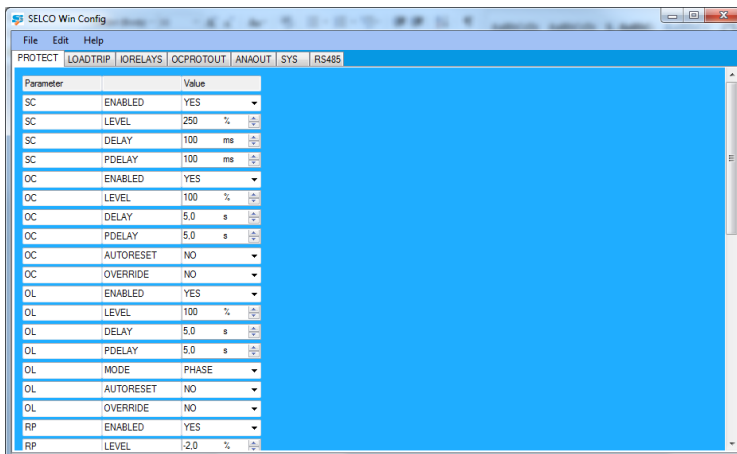
- Choose your COM port. Speed remains at 9600.
- Click “OK”
- After this the unit will prompt for downloading the configuration from the connected controller. Click “Yes” and the unit will download the configuration.

4. Downloading a configuration file from a unit

- Connect to the module using the RS232 cable.
- Double click on the WinConfig icon 
- WinConfig software will start and immediately begin download process of the configuration file from the controller:



- Once the configuration file is downloaded, WinConfig will show following screen (this example is from a S6000 IO/P module):

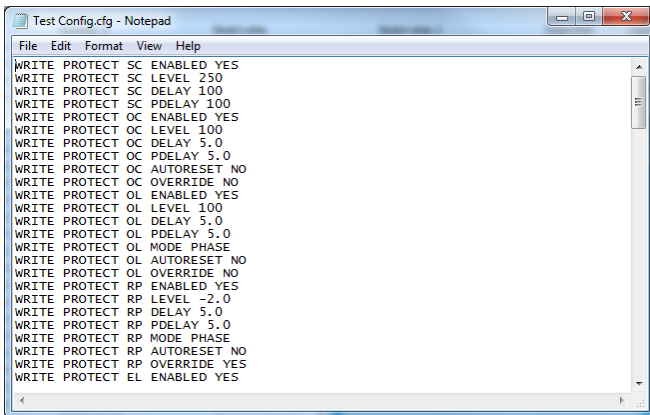


- Click on “File” and then “Save configuration as...”
- Choose a file location and give a name to the file (e.g. G1 S6000)
- Click “Save”

Now the configuration file is saved as G1 S6000.cfg at the location of your choice.



The Configuration file can be opened viewed and modified with the notepad:



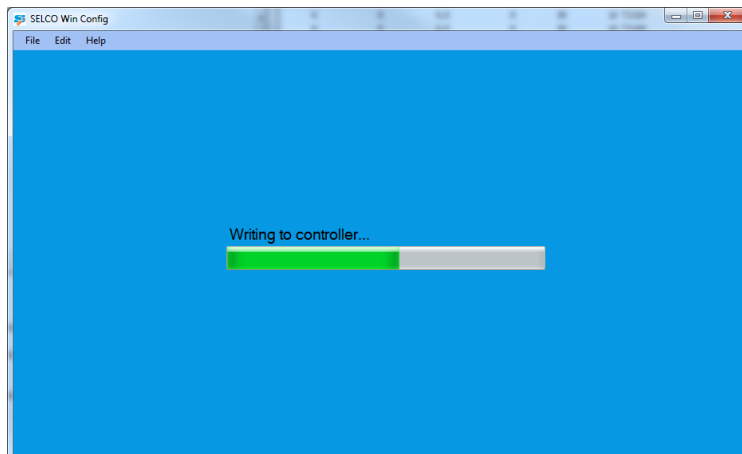
```
File Edit Format View Help
WRITE PROTECT SC ENABLED YES
WRITE PROTECT SC LEVEL 250
WRITE PROTECT SC DELAY 100
WRITE PROTECT SC PDELAY 100
WRITE PROTECT OC ENABLED YES
WRITE PROTECT OC LEVEL 100
WRITE PROTECT OC DELAY 5.0
WRITE PROTECT OC PDELAY 5.0
WRITE PROTECT OC AUTORESET NO
WRITE PROTECT OC OVERRIDE NO
WRITE PROTECT OL ENABLED YES
WRITE PROTECT OL LEVEL 100
WRITE PROTECT OL DELAY 5.0
WRITE PROTECT OL PDELAY 5.0
WRITE PROTECT OL MODE PHASE
WRITE PROTECT OL AUTORESET NO
WRITE PROTECT OL OVERRIDE NO
WRITE PROTECT RP ENABLED YES
WRITE PROTECT RP LEVEL -2.0
WRITE PROTECT RP DELAY 5.0
WRITE PROTECT RP PDELAY 5.0
WRITE PROTECT RP MODE PHASE
WRITE PROTECT RP AUTORESET NO
WRITE PROTECT RP OVERRIDE YES
WRITE PROTECT EL ENABLED YES
```

In case you only want to download an existing file from an old unit and upload it to a new, be careful not to modify any lines.

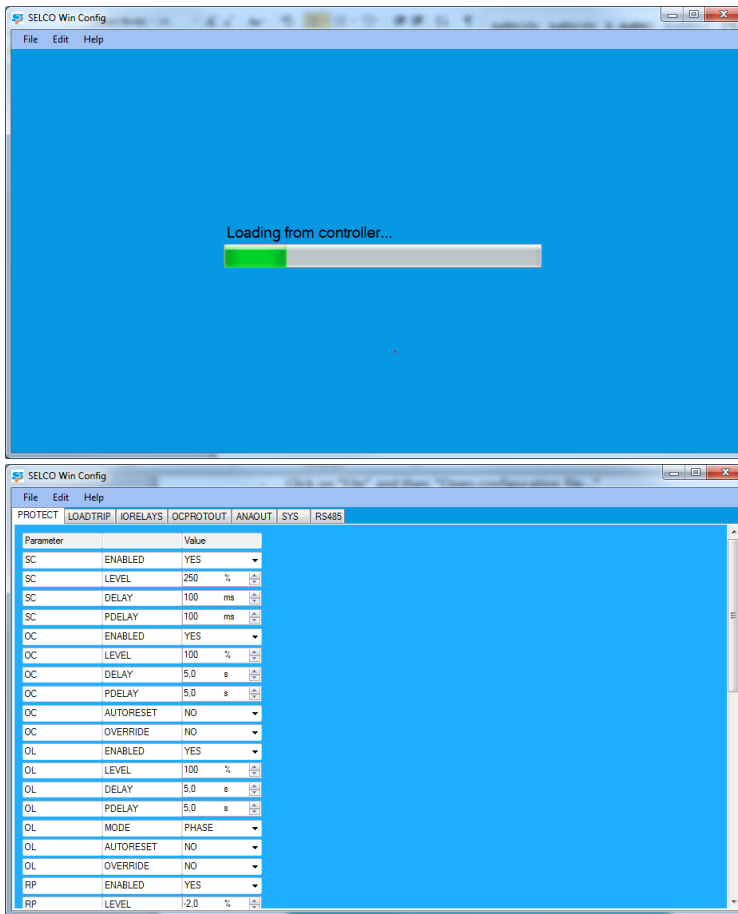
5. Uploading a configuration file to a unit

It is possible to upload a configuration file to a unit.

- Connect to the controller through the RS232 cable
- Open WinConfig
- WinConfig will open and immediately download the configuration of the connected controller
- When it is ready, click on "File" and then "Open configuration file..."
- Choose the configuration file you have saved on your hard disk and click "Open"
- The software will start writing the configuration file to the unit:



- After writing the configuration to the unit it will download the configuration from the unit and show it on the screen:



Now your saved configuration file is uploaded to the unit.

6. Comparing configuration files with WinMerge

After replacing a unit you can compare the configuration of the old controller with that of the new controller through a merging tool. This is also very useful in case you want to compare the configuration of different generators.

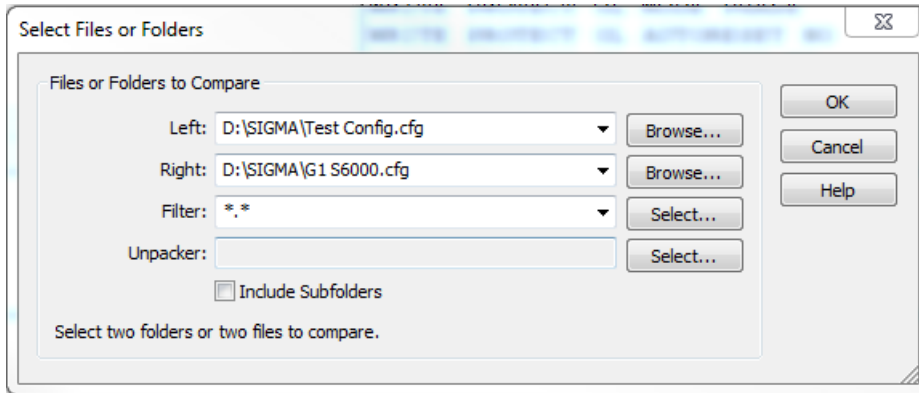
We suggest using WinMerge for this. Winmerge is an Open Source differencing and merging tool for Windows. With WinMerge it is possible to open two configuration files at the same time. WinMerge will then highlight any differences between the configuration files, thus it is not necessary to manual check line by line.

WinMerge can be downloaded here:

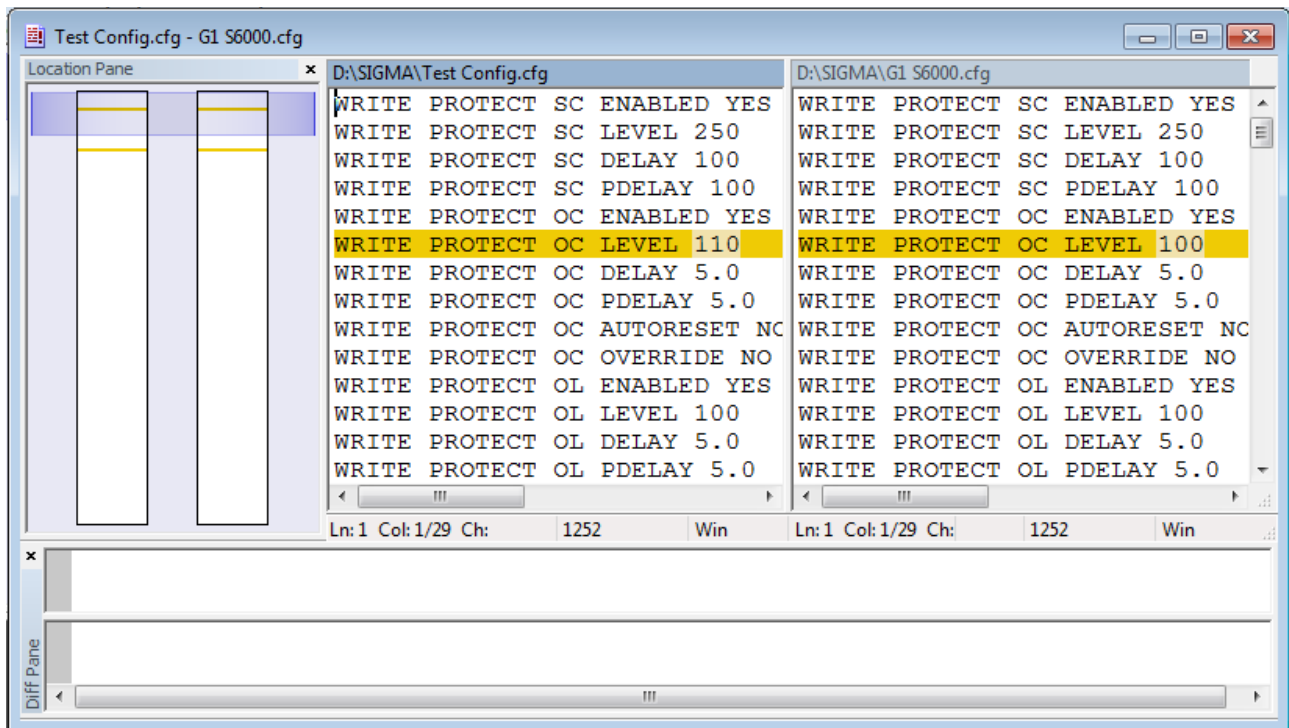
<http://winmerge.org/>

After installation it is possible to open two configuration files within WinMerge.

- Click on “File” then “Open



- Choose configuration file 1 under “Left” and configuration file 2 under “Right”
- Winmerge will open both files and highlight any differences.



Note that there can be some differences between the commands of older and newer firmware. Some commands existing in older modules have been made redundant, while new functions have been added in newer versions. Units are backwards compatible meaning that in case a newer unit in default configuration is being configured with an older configuration file; it will be compatible to the older unit.

If in doubt, please contact SELCO support.